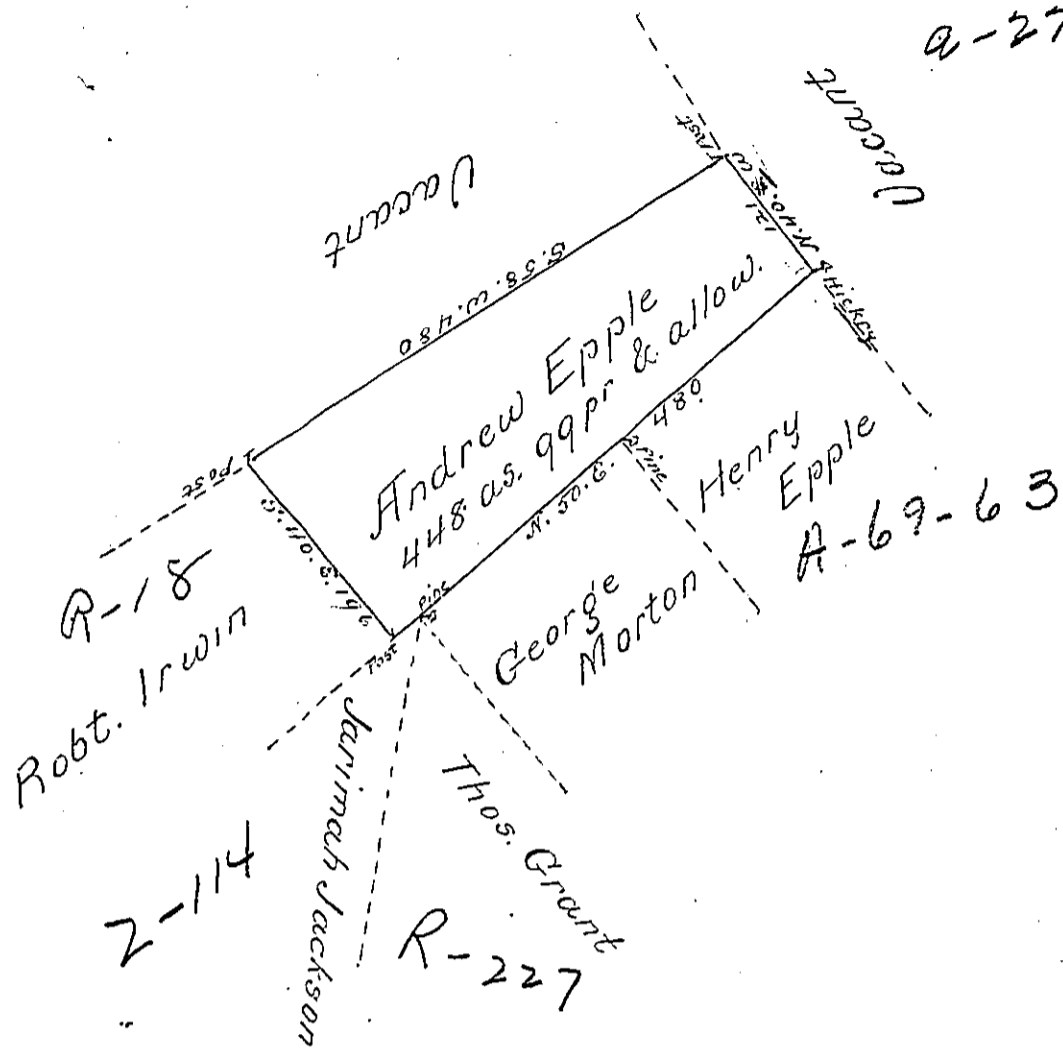


a-27-233



Situate on the waters of Mash Creek  
 in Bald Eagle Township in the County of Mif-  
 flin surveyed on the 19 day of August 1794 for  
 Andrew Epple by virtue of his warrant bearing date  
 on the 1 day of July 1793 containing four (4) ac  
 forty (40) sq (0.617 ac) by Nine (9) p (0.215) & the usual  
 allowance

Jo. J. Wallis D.S.

To Daniel Brodhead Esqr.  
 Surveyor General }

IN TESTIMONY that the above is a copy of the original remaining on file in  
 the Department of Internal Affairs of Pennsylvania, made  
 conformably to an Act of Assembly approved the 16th day of  
 February, 1833, I have hereunto set my Hand and caused  
 the Seal of said Department to be affixed at Harrisburg,  
 this fifth day of March 1901

James W. Latta  
 Secretary of Internal Affairs.